

RPJ809Hu01 50µg
Recombinant Tyrosine 3/Tryptophan 5
Monooxygenase Activation Protein Zeta (YWHAz)
Organism Species: Homo sapiens (Human)
Instruction manual

FOR IN VITRO USE AND RESEARCH USE ONLY
NOT FOR USE IN CLINICAL DIAGNOSTIC PROCEDURES

12th Edition (Revised in Aug, 2016)

[**PROPERTIES**]

Source: Prokaryotic expression.

Host: *E. coli*

Residues: Met1~Asn245

Tags: N-terminal His-Tag

Tissue Specificity: Placenta, Brain, Testis.

Subcellular Location: Cytoplasm. Melanosome.

Purity: >95%

Traits: Freeze-dried powder

Buffer formulation: PBS, pH7.4, containing 1mM DTT, 5% trehalose, 0.01% sarcosyl and Proclin300.

Original Concentration: 200ug/mL

Applications: SDS-PAGE; WB; ELISA; IP; CoIP; Purification; Amine Reactive Labeling.

(May be suitable for use in other assays to be determined by the end user.)

Predicted isoelectric point: 5.0

Predicted Molecular Mass: 29.0kDa

Accurate Molecular Mass: 21kDa as determined by SDS-PAGE reducing conditions.

Phenomenon explanation:

The possible reasons that the actual band size differs from the predicted are as follows:

1. Splice variants: Alternative splicing may create different sized proteins from the same gene.
2. Relative charge: The composition of amino acids may affects the charge of the protein.
3. Post-translational modification: Phosphorylation, glycosylation, methylation etc.
4. Post-translation cleavage: Many proteins are synthesized as pro-proteins, and then cleaved to give the active form.
5. Polymerization of the target protein: Dimerization, multimerization etc.

[**USAGE**]

Reconstitute in PBS (pH7.4) to a concentration of 0.1-1.0 mg/mL. Do not vortex.

[STORAGE AND STABILITY]

Storage: Avoid repeated freeze/thaw cycles.

Store at 2-8°C for one month.

Aliquot and store at -80°C for 12 months.

Stability Test: The thermal stability is described by the loss rate. The loss rate was determined by accelerated thermal degradation test, that is, incubate the protein at 37°C for 48h, and no obvious degradation and precipitation were observed. The loss rate is less than 5% within the expiration date under appropriate storage condition.

[SEQUENCE]

```
MDKNELVQKA KLA EQAERYD DMAACMKSVT EQGAELSNEE RNLLSVAYKN  
VVGARRSSWR VVSSIEQKTE GAEKKQQMAR EYREKIETEL RDICNDVLSL  
LEKFLIPNAS QAESKVFLK MKGDYYRYLA EVAAGDDKKG IVDQSQQAYQ  
EAFEISKKEM QPHTPIRLGL ALNFSVFYFE ILNSPEKACS LAKTAFDEAI  
AELDTLSEES YKDSTLIMQL LRDNLTLWTS DTQGDEAEAG EGEN
```

[IDENTIFICATION]

```
DTGGATAAAAT GAAGCTGGTTCGAGAGCCAACTGGGCGAGAGCTGAGCGATATGAGAGTGGGAGCCGCAATGAGTGTCTGACGAGCAAGAGCTGAATATCGAATGAGGAGGGAATCTCTCTGAGTCTTATAAAATGTGTAGAGAGCCGTAGGTCACTTGGAGGGTCTCTGAGTATTGAGCAAGAGCGGAH  
M D K N E L V Q K A K L A E Q A E R Y D D H A A C M K S V T E G G A E L S N E E R N P L S V A V K N V V G A R R S S W R V V S S I E Q K T E I
```

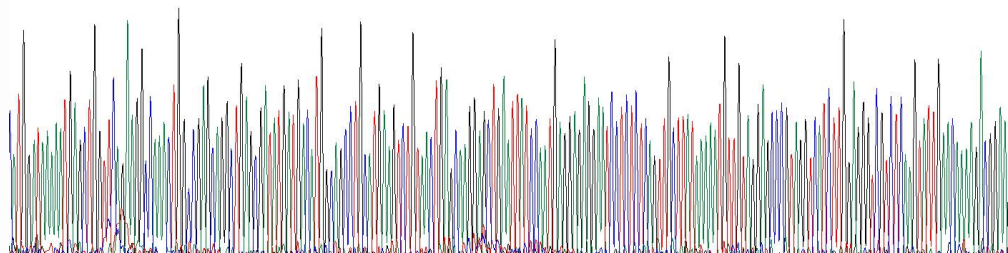


Figure 1. Gene Sequencing (Extract)

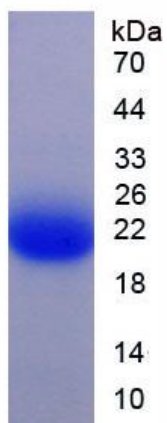


Figure 2. SDS-PAGE